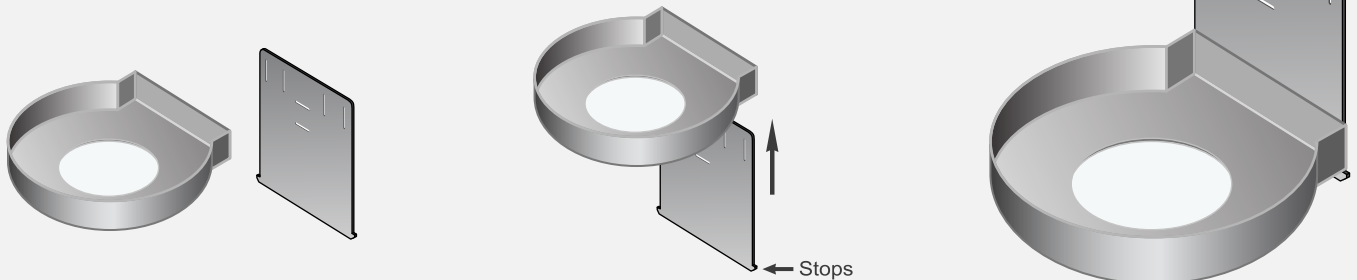




Assembly Instructions for the DrumBuddy

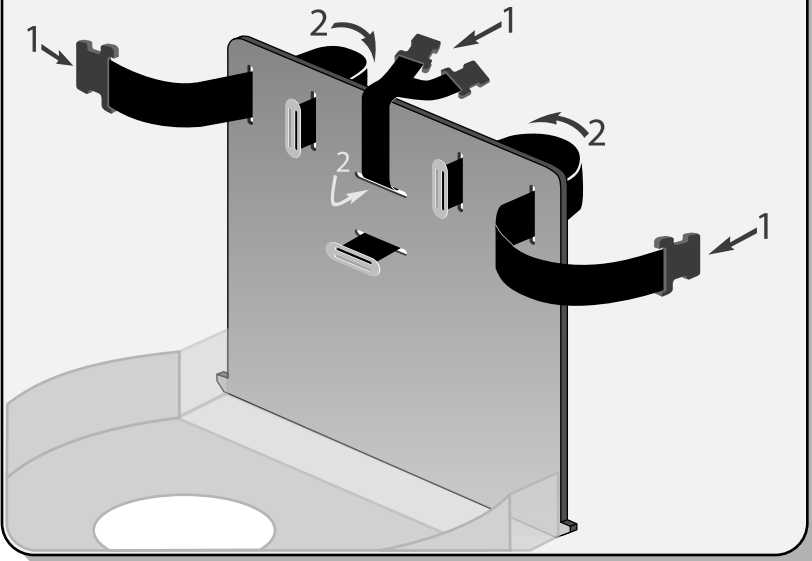
STEP 1

- The System consists of a circular drum tray and a flat breast plate.
- Slide the breast plate up through the slot located on the back of the drum tray (as shown).
- Make sure that the ears on the breast plate act as stops.



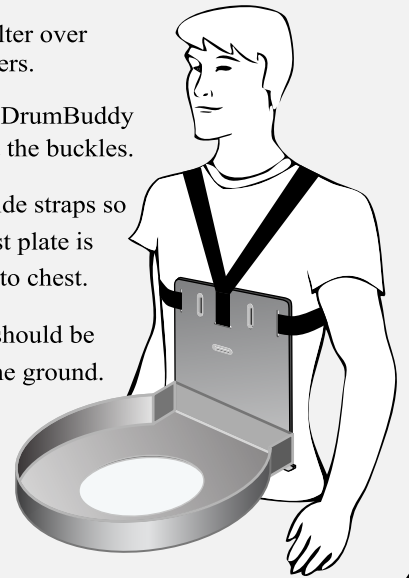
STEP 2

Strap Installation: Insert the silver end of each buckle holder strap in the slots of breast plate. (as shown)



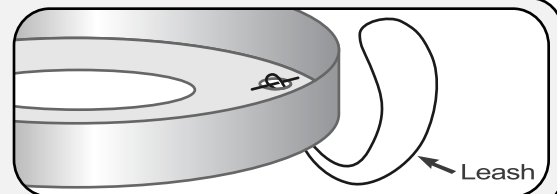
STEP 3

- You Are now ready to enjoy your DrumBuddy.
- Place the halter over your shoulders.
- Address the DrumBuddy and connect the buckles.
- Adjust the side straps so that the chest plate is pulled tight to chest.
- Side straps should be parallel to the ground.



STEP 4

- (Optional) Use leashes to hold drum down onto the tray.
- Simply loop the leash over the lugs at the top of your drum.



STEP 5

- (Optional) The system has a foam body cushion which may be attached to the Velcro on the flat portion located on the rear of the DrumBuddy base.